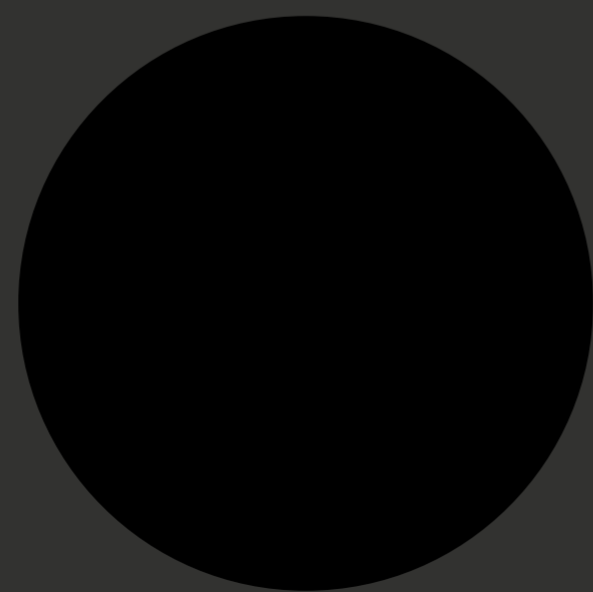




YarraBend

The World's Most Liveable Suburb





YarraBend

The World's Most Liveable Suburb



Welcome to the World's Most Liveable Suburb.

Changing the way we live.

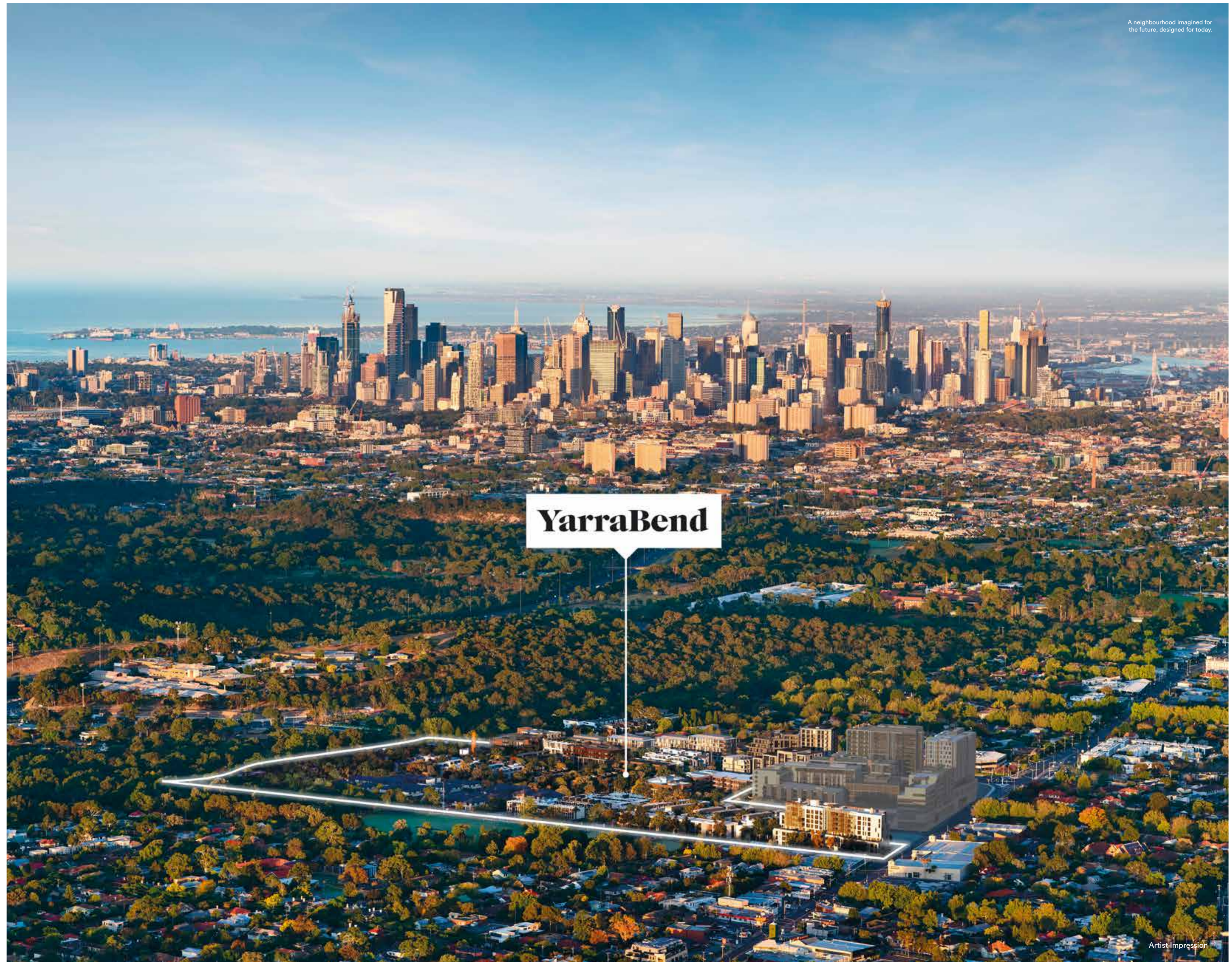
YarraBend is more than a reinvention of inner-city living. It's an acknowledgement that the way we actually live in the world needs to radically change.

Such a bold ambition needs a bold approach. So we're bringing together the latest ideas and innovations from every corner of the globe. We're asking the world's most adventurous architects and artists to create an inspiring destination that is completely unique and that our residents won't just love—but love to live in.

So much so, we've been dubbed "the world's most liveable suburb"—a feat we're on track to achieve by 2025. But don't just take our word for it. London-based trend forecasters, The Future Lab, recognised YarraBend as being at the forefront of global liveability in their 2018 report.



View our short film for a taste of the lifestyle on offer.



A neighbourhood imagined for the future, designed for today.

Artist Impression



Introduction ——— 06

History	08
Location	10
Map	12
Connectivity	14

Masterplan ——— 16

Masterplan	18
The Hub	20
Health & Wellness Centre	26
YarraBend Parks	30
Alphington Village	32

Lifestyle ——— 34

Lifestyle	36
Technology	38
Health & Wellness	42
Food & Entertainment	48
Art & Design	52
Sustainability	56
Knowledge	60

Project Team ——— 64

Glenvill	66
Project Team	68

01

Introduction

History	08
Location	10
Map	12
Connectivity	14

The Paper Mill.

You can't influence the future if you don't acknowledge the past.



YarraBend stands as a monument to history while serving as a lens for the future. Heritage features will be adapted and recycled and the neighbourhood's distinct character will be reinterpreted and reintroduced. In the height of the Industrial Age, the Alphington Paper Mill was born. Its red-brick foundations and towering smokestacks came to define the area for another 91 years until a vision of an entirely new community took shape.

YarraBend seamlessly integrates the idyllic riverside living of early settlement and the optimistic fervour of the industrial revolution. As the unique history of the area melds with an inspiring vision of the future, YarraBend will serve as a beacon for those of us who believe that technological innovation and smart design will shape the future of inner-city living.

This is a story of progress and togetherness. And it's only the beginning.



Location.

**Set in Alphington—
just 6.5 kilometres
from Melbourne’s CBD
on the banks of the
Yarra River.**

YarraBend is a visionary new neighbourhood, located alongside the Yarra River in the highly coveted suburb of Alphington. Perfectly placed, moments from the Eastern Freeway and minutes from the city, it is well-connected in every way, surrounded by lush parklands and beautiful golf courses.

Designed for today but always with the future in mind, a thriving community is fast taking shape. Redefining contemporary living, around 1,300 townhouses, houses, apartments and lofts will have access to cutting-edge technology and holistic health and wellness amenities. With the latest sustainable living ideas and world-class design, YarraBend heralds a new age of urban regeneration.



Artist Impression

Local Inspiration.

YarraBend is a unique location neighbouring the well-established refinement of Kew and Ivanhoe, the multicultural charm of Fairfield and the eclectic offering of Melbourne's inner-north. From schools to healthcare to recreation, every amenity is at your door, or mere minutes on the road.

Villages & Precincts

- 01 Fairfield 5 min drive
- 02 Kew 5 min drive
- 03 Kew East 10 min drive
- 04 Clifton Hill 5 min drive
- 05 Ivanhoe 5 min drive
- 06 Northcote/Thornbury 10 min drive
- 07 Hawthorn 15 min drive

Education

- 08 Alphington Grammar
- 09 St Anthony's Primary
- 10 Alphington Primary
- 11 Ivanhoe Grammar
- 12 Ivanhoe Girls Grammar
- 13 St Bernadette's Catholic School
- 14 Mary Immaculate Primary

Surrounds

- 15 Kew East Primary
- 16 St Anne's Catholic Primary
- 17 Andale School
- 18 Sacred Heart Primary
- 19 Trinity Grammar
- 20 Ruyton Girls' School
- 21 MLC Melbourne
- 22 Xavier College
- 23 St Paul's College
- 24 Kew High School
- 25 Carey Baptist Grammar
- 26 Camberwell Grammar

Transport

- Alphington Train Station 450m
- Fairfield Train Station 1000m
- Bus Route 546 2m

Hospitals

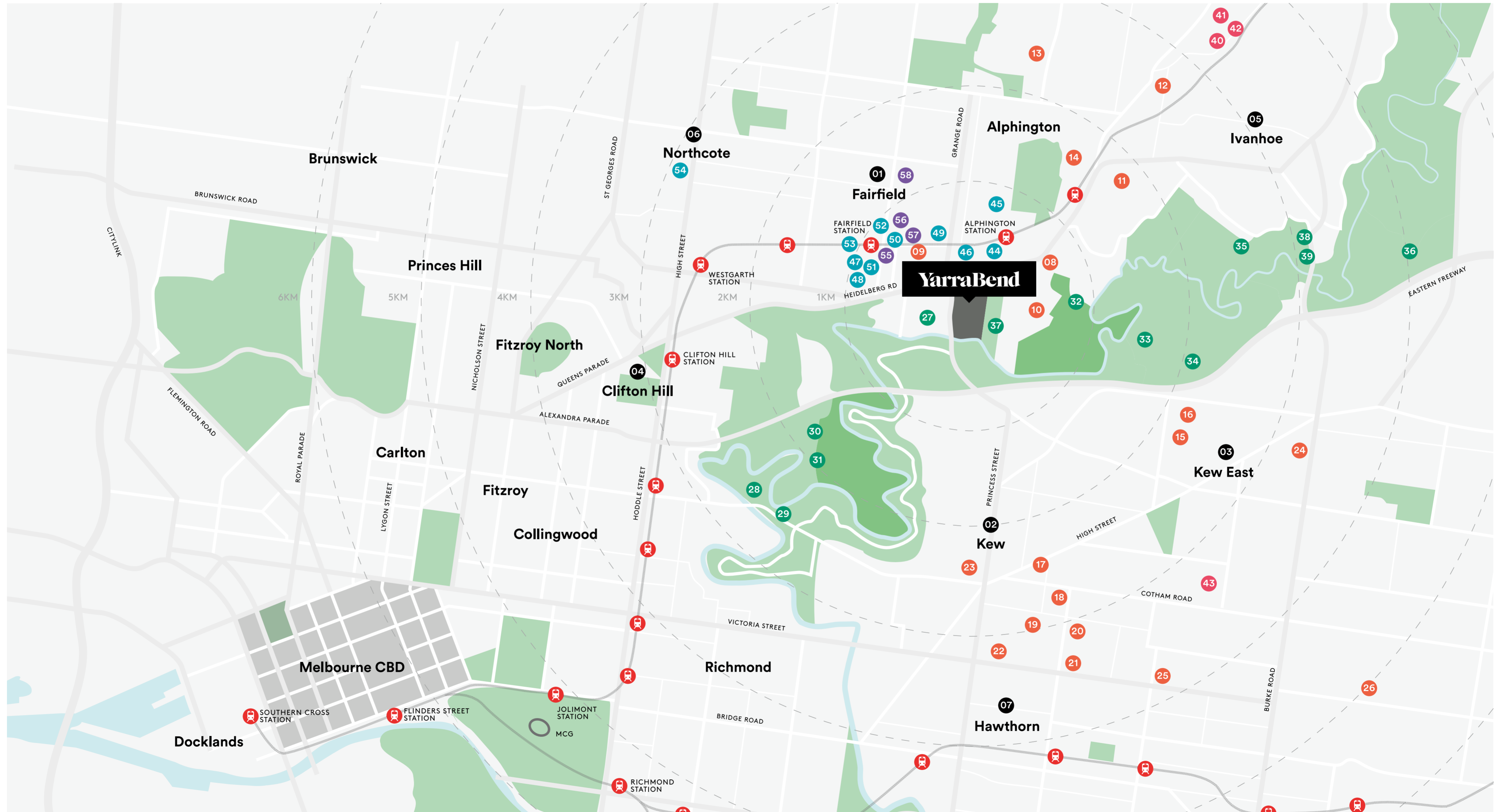
- 27 Coate Park
- 28 Studley Park
- 29 Studley Park Boathouse
- 30 Yarra Bend Park
- 31 Yarra Bend Golf Course
- 32 Latrobe Golf Club
- 33 Green Acres Golf Club
- 34 Kew Golf Club
- 35 Ivanhoe Public Golf Course
- 36 Freeway Golf Course
- 37 Alphington Park
- 38 Eaglemont Tennis Club
- 39 Eaglemont Dirt Jumps

Food & Drink

- 40 Austin Hospital
- 41 Warringal Private Hospital
- 42 Mercy Hospital for Women
- 43 St Vincent's Hospital
- 44 Benjamin's Kitchen
- 45 Paladarr
- 46 Fossette
- 47 Fifteen Pounds
- 48 Hoppa & Joe
- 49 Mr Wednesday

Shopping

- 50 Thai Station
- 51 Flour and Salt
- 52 C.H. James
- 53 Two Fat Monks
- 54 Estelle
- 55 Interior Base
- 56 Fairfield Books
- 57 Brenta Meats
- 58 Fairfield Library





Connectivity.

A close encounter with everything.

YarraBend, as its name indicates, lies just a stroll away from Melbourne's original thoroughfare: the meandering, shimmering Yarra. In any direction, enjoy convenient proximity to whatever you need. Drivers are only 450m away from the Eastern Freeway on-ramp, with the upgraded Chandler Highway and Heidelberg Road thoroughfares easily accessed.

Residents may not even need a car, with Alphington Station just 450m away, and multiple major bus lines offering plenty of commuting options. For those who prefer two wheels, bike-friendly roads makes cycling a pleasure within the suburb, linking with the Main Yarra Trail and Melbourne's extensive bicycle network further afield.

Need to head out?
Then wait a moment before you grab the car keys. A five-minute walk will take you 450m to Alphington Station.



02

Masterplan

Masterplan	18
The Hub	20
Health & Wellness Centre	26
YarraBend Parks	30
Alphington Village	32

Curating a Community.

The YarraBend masterplan divides 14 hectares into six separate precincts—each is a distinct reflection and response to the artistry, heritage and aesthetics of its immediate surroundings. The careful design process has ensured the precincts have their own unique personalities while connecting seamlessly together.

In a very real way, the YarraBend masterplan is a celebration of how Melbourne's own diverse characters have come together to tell their story. And like all good stories, this one's going to be around for generations to come.

The Mills Precinct

Echoing the industrial heritage of the site, The Mills breathes new life into a Melbourne icon with a selection of contemporary townhouses and modern lofts.

The Parkview Precinct

The precinct brings the laidback park culture of Melbourne's coolest suburbs to the leafy streets of Alphington.

River Quarter

Redefining luxury living in Melbourne, these residences offer stunning riverfront views, beautiful parklands and contemporary architecture.

Artisan Precinct

Taking its cues from some of Melbourne's most iconic suburbs, it will be a destination for a whole new generation of tastemakers.

Heritage Precinct

The Heritage Precinct includes historic buildings original to the mill which have been adapted, blurring the lines between the old and the new.

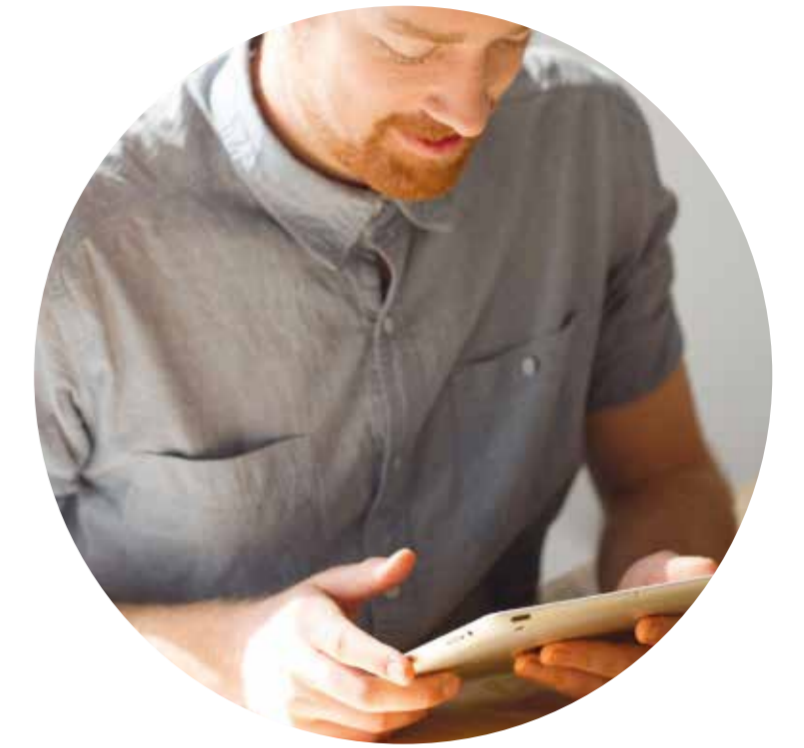
Outer Circle

Paying homage to the Outer Circle railway, this precinct is home to the Paper Trail - a tranquil path that connects to the high-tech wellness centre.





Artist Impression



The Hub.

The space to entertain your imagination.

A three storey building in the heart of the Artisan Precinct, The Hub will be an exclusive space for YarraBend residents and their lucky guests. Designed by renowned architects Techné, The Hub will pull a crowd by pushing boundaries.

The focal point of the Artisan Precinct and the greater YarraBend neighbourhood, The Hub draws the eye as you arrive, its jewel-like quality and unique character making an impressive statement. From within, spaces embrace views of the external landscape, be it the vibrant community or green outlooks.

The Hub is where the community will converge, buzzing with energy and atmosphere.

01

Private dining.

Entertain your imagination (and your friends).



On ground level, you'll find welcoming spaces that feel a little like an extra room of your home. Featuring a kitchen and two private dining rooms that open onto the external courtyard, The Hub is the perfect space for entertaining.

02

Recreation lounge.

A space to relax, a space to have fun.



When it's time to chill, The Hub lounge provides an comfortable space to hang out—or just zone out with a pool table and TV.

03

Indoor cinema.

Ready for that 80s movie marathon.



The Hub comes equipped with a 12-seat indoor cinema that can be booked via the YarraBend app, so you can enjoy a movie marathon or private screening with friends.

04

Rooftop terrace.

Bringing the indoors outside.



The Hub is crowned by a spectacular rooftop terrace, with a lounge, barbeque facilities, a fire pit, and space to enjoy under the sky.

WorkLab.

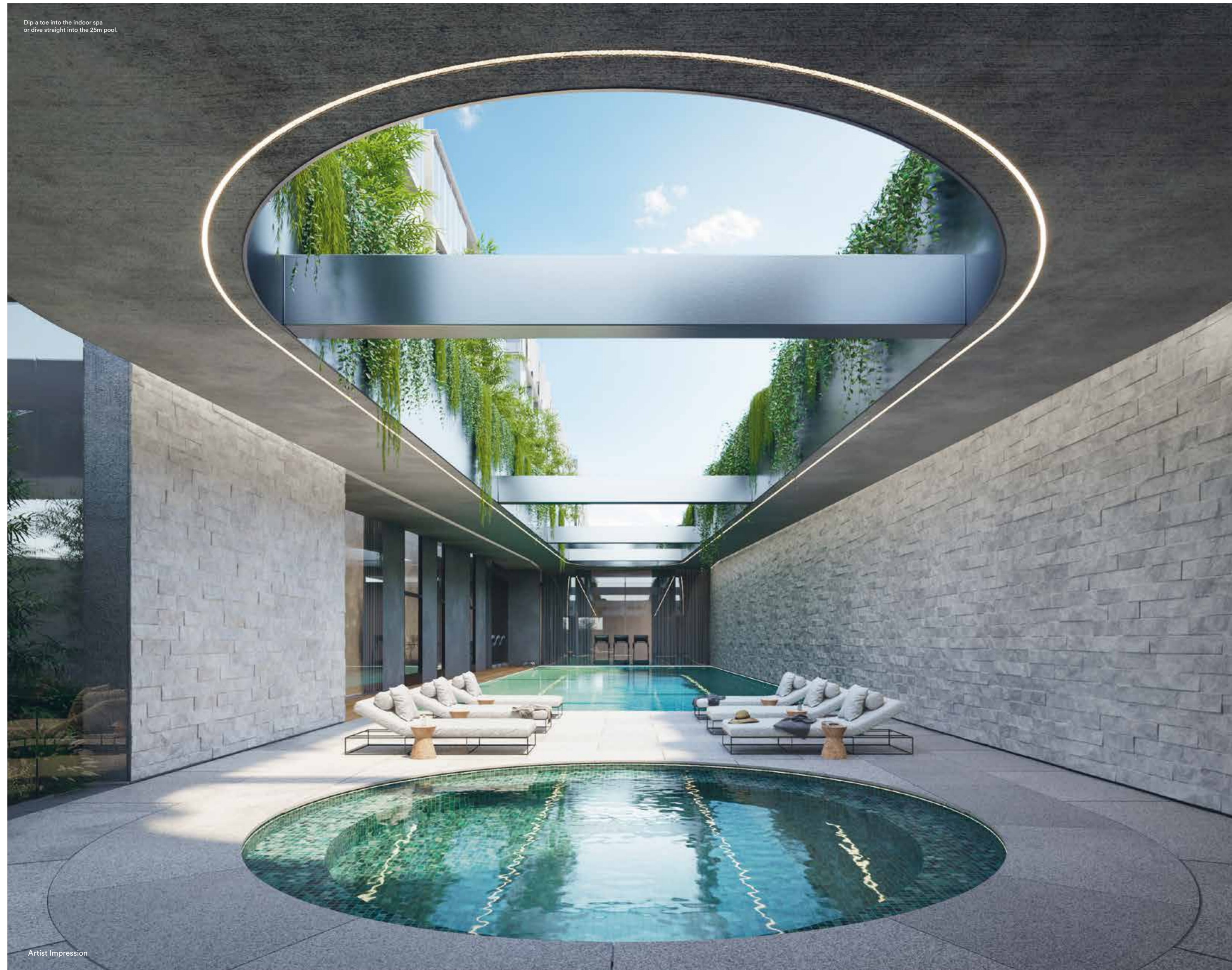
Brave that three-minute commute.

YarraBend's innovative co-working space, WorkLab features multiple workstations, a meeting room, a lounge area and all the technology you need and expect. Located in the Artisan Precinct's stunning Hub building, WorkLab's window views are not reserved only for the executives.

Nine-to-fiver or nocturnal-by-nature, you can book a space to meet your requirements via the YarraBend app, and work when inspiration knocks. Just a short stroll from anywhere in YarraBend, you can go from your place to office space in a heartbeat.



Artist Impression



Dip a toe into the indoor spa or dive straight into the 25m pool.

Artist Impression

Health & Wellness Centre.

Relax and recharge.

While you enjoy the hustle and bustle with the city just a stone's throw away, YarraBend's Health & Wellness Centre offers quiet respite when you get home. Rejuvenate with mindful activities like yoga and let your day melt away in the steam, sauna or massage rooms.



Take a sensory journey through YarraBend's wellness centre.



Inner city, inner peace.

Our facilities set a new bar
for fitness and wellbeing.

1. World-class, cloud-based Technogym® equipment
2. Yoga exercise areas with classes
3. 25m indoor and outdoor pools
4. Technogym® virtual studio
5. Steam room and sauna
6. State-of-the-art gym
7. Personal trainer areas
8. Massage rooms
9. Outdoor onsen spas

Discover wellbeing in perfect balance with yoga classes.

Above image courtesy of Technogym®—the world-leading brand that will feature in YarraBend's gym.



Artist Impression



Artist Impression

YarraBend Parks.

Home to multiple unique parks, designed from the ground up.

Feed your curiosity at Artisan Park, alive with local providores and makers. Paint a picture of modern family living with progressive playgrounds, and barbeque equipment at Paper Square. Or enjoy the tranquility of Heritage Park – a stone's throw from the Yarra River.

There are welcome surprises around every corner. Explore them all via the Paper Trail—an elevated piazza that connects you to the best of YarraBend. Whether you're seeking a little adventure or a little downtime, at YarraBend there's something for everyone.



Alphington Village.

Convenience is never far away.

Located right next door to YarraBend, Alphington Village will be a buzzing new shopping hub. As YarraBend grows to become the beating heart of the area, The Village will ensure that everything you need is conveniently close, including:

- Coles and Aldi supermarkets
- Speciality retail
- Pharmacy
- Community centre and childcare

A vibrant hub for the whole community.

03

Lifestyle

Lifestyle	36
Technology	38
Health & Wellness	42
Food & Entertainment	48
Art & Design	52
Sustainability	56
Knowledge	60

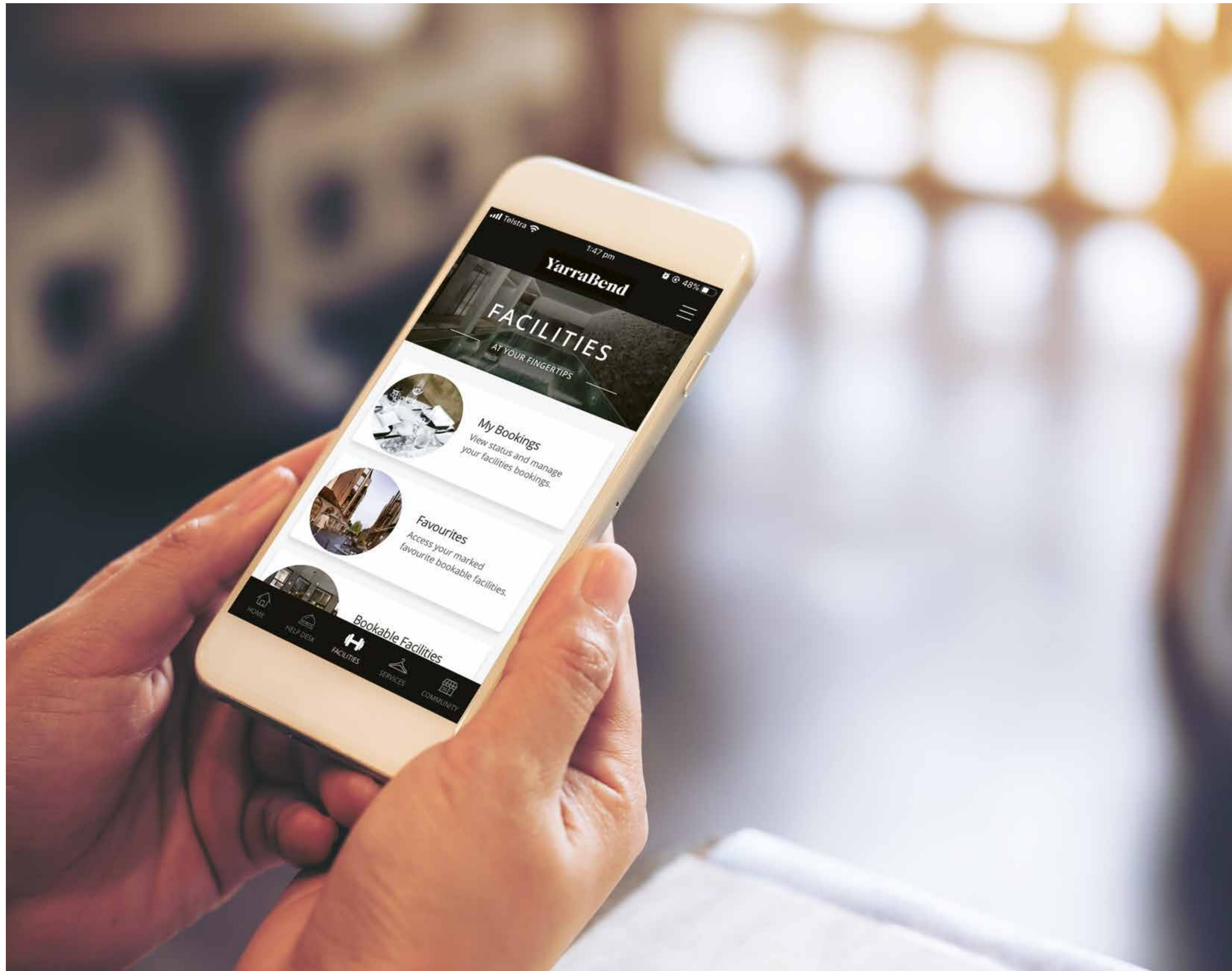
No Ordinary Lifestyle.

Six pillars to a strong foundation.

YarraBend's six pillars—sustainability, technology, art and design, health and wellness, knowledge, and food and entertainment—reflect not only what is important to people today, but what will make their future a better one. As well as being the perfect way to articulate YarraBend's impressive array of amenities, each pillar reflects a part of the lifestyle our residents and visitors will come to embrace and embody.

YarraBend lives and breathes these pillars. Discover how every decision made, brick laid and plan drawn has brought us one step closer to creating what is fast becoming The World's Most Liveable Suburb. An ambitious target, and a bold statement—but that's what keeps things interesting.





Technology.

Designed to go unnoticed.

At YarraBend, you'll find innovation everywhere you turn. But like all good design, unless you're looking for it, you'll hardly notice it. This isn't tech for its own sake, but tech put to work in service of a better life. From high-speed internet, to home automation, to a dedicated concierge for any tech-related dramas—you'll benefit from clever touches that make your day run more smoothly, every day. Some may think of it as bleeding edge. But we tend to think of it as bleeding obvious.

Imagine a place where your world is at your fingertips.

01

Tech concierge.

We geek out, so you can chill out.



Love technology, but wish it came without the endless headache of plugging in, setting up, updating and upgrading? Us too.

That's why we've devised a unique service exclusive to YarraBend residents. It gives you technical assistance for those moments when the thingamajig won't sync with the whats-it, and the doo-da says 'File Not Found'.

Your resident Tech Concierge has the same server smarts as your geeky 14-year-old nephew, but you won't need to bribe them to help. In fact, that's their entire job: providing advice over the phone or even at your kitchen table. All so you can stop swearing at a screen and start, well, living the rest of your life.

02

YarraBend app.

A whole suburb in the palm of your hand.



Community is about more than just living near other people. It's about connection, communication—and let's face it, convenience. That's why YarraBend residents will be able to access an exclusive app designed to make daily life friendlier and easier.

Sort out carpooling with your neighbours, RSVP to a YarraBend social event, or book in tomorrow's personal training session or the YarraBend's Tech Concierge. You can even get a real-time view of how full the gym is—while still curled comfortably under your doona.

03

Internet on tap.

Always connected on the move.



Offering high-speed internet and with free Wi-Fi throughout Artisan Park, Heritage Park and Paper Square, you'll never be left searching for a signal.

Better still, our partnership with Opticomm will have you hitting the ground running. YarraBend residents will have access to the network with guaranteed fibre connection to the home.

04

Smart-wired for convenience.

Never wonder if you've turned the lights off.



YarraBend residences will be smarter than your average home, with options like lights and blinds that can be controlled from your phone.

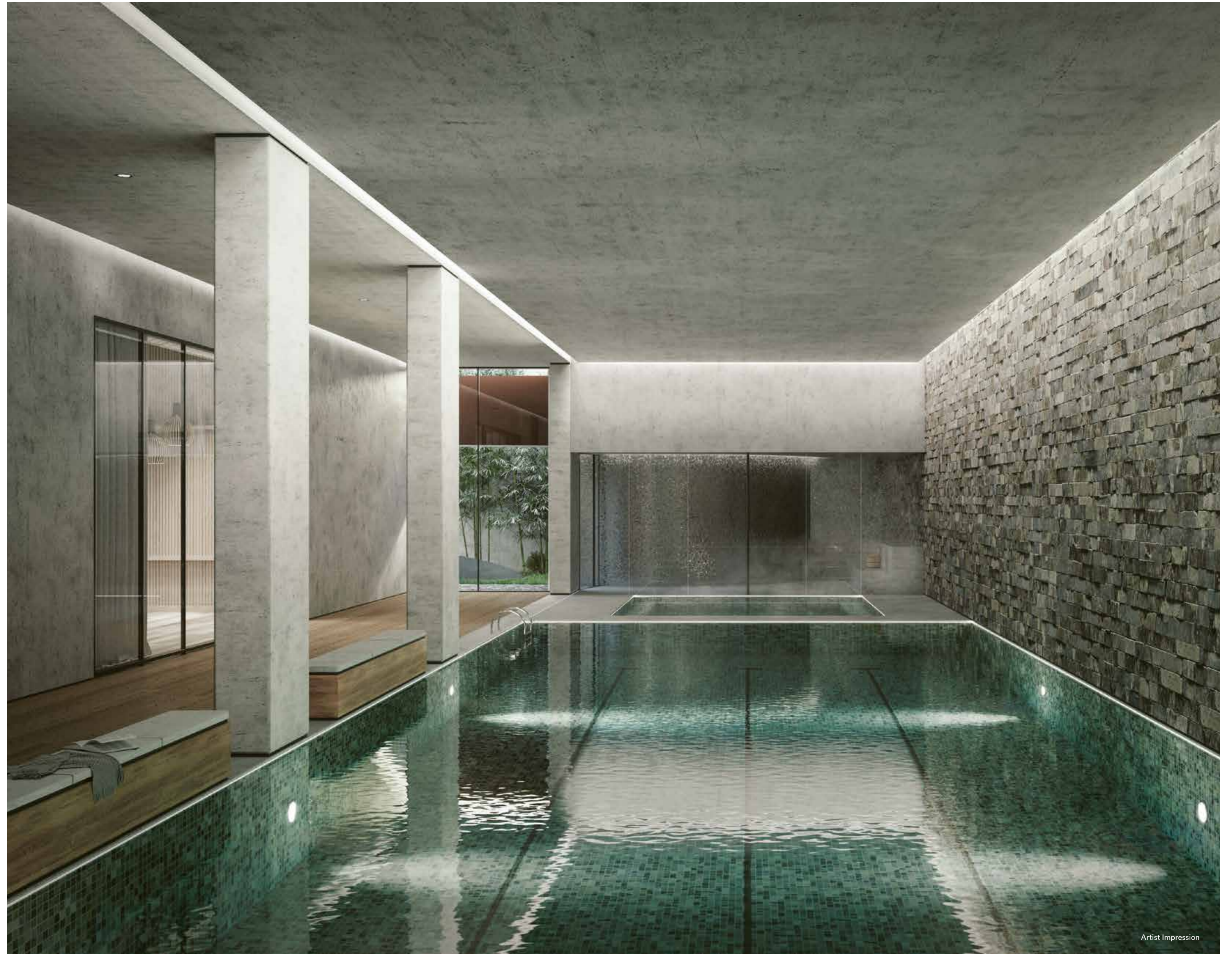


Health & Wellness.

We'll admit it, being healthy is hard these days—what used to be a simple case of eating well and exercising regularly is so much more complicated now. At YarraBend, the aim is to make a healthy lifestyle a little more personal and a lot more accessible. The approach is a holistic one—it combines the latest research and technology while prioritising wellbeing and community engagement.

More importantly, health and wellness will always extend into everyday life. As well as a keen focus on making the area bicycle friendly, you'll also have easy access to the Yarra Trail, indoor and outdoor swimming pools, an onsen spa, a Technogym virtual studio and a yoga room. Hey, who knows, maybe staying healthy can be more fun than it sounds.

At YarraBend there's a space for every pace.



Artist Impression

01

Health and Wellness Centre.

Where future-focused technology meets human engineering.



The world-class Health and Wellness Centre—exclusive to YarraBend residents—will have the best equipment and classes when you need that extra push.

02

Aquaholics welcome.

Relax or workout—however the mood strikes you.



Indulge in the spa, dive into the 25m indoor pool or bask in the sun in our outdoor lap pool.

No matter what depth or breadth you're looking for, aquaholics are covered.

03

Golf Mecca.

Eight golf courses within 10 minutes.



Golfers are not left wanting, or waiting either. There are no less than eight prestigious golf clubs just 10 minutes away. All in all, it is close to the city, but far from ordinary.

04

Bike hub.

All paths lead to YarraBend.



If you're one of those people who think the world spins a little faster on two wheels, we've centred things around cyclists too. Bike-friendly road design, bike storage for every property and unimpeded access to the Yarra Trail makes for an easy city commute.

01

River frontage.

Direct access to the Yarra.



With creeks, rivers and the natural bushland of Alphington Park at your doorstep, you can count a whole bevy of beautiful flora and fauna among your new neighbours. In fact, with 300m of direct river-frontage to the Yarra, you can enjoy a row or a casual morning stroll along the water.

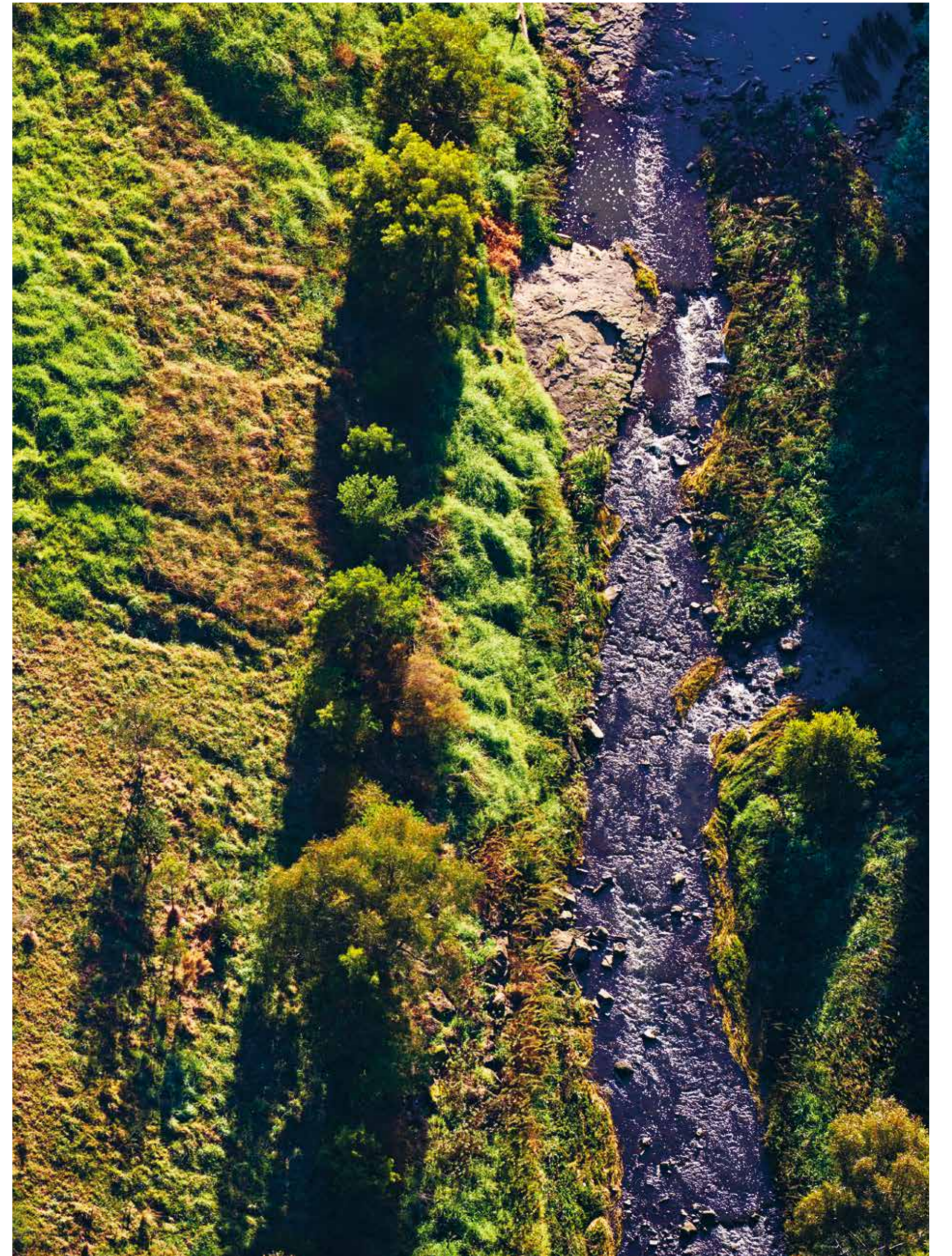
02

Green spaces.

More parks than you can poke a stick at.



With 21 parks within a 1km radius, and 41 parks between 1km–2km away. You'll never be short of a green space to explore.





Food & Entertainment.

Hungry for adventure.

YarraBend is centred around getting the important things in life just right. Which, as far as we're concerned, comes down to mastering the perfect balance of friends, family, entertainment, food and wine.

Whether it is a perfect dinner with a loved one, coffee with an old friend, a lazy round of golf on a Sunday—this is one place you're guaranteed to never get bored.

At the end of the day, it is all about devoting your time and energy to the things that matter. Whether you are hungry for things to do or for things to eat (and drink), you'll find it all at YarraBend.

Melbourne's gastronomic adventures are within easy reach.

Artisan District.

A careful curation of Melbourne's finest.

Set to become a brand new destination for Melbourne tastemakers, the Artisan Food District will be carefully curated by renowned restaurateur Scott Pickett, and will be home to some of Melbourne's most impressive restaurants, cafés, bars, providers, delis and unique grocers. Artisan Park will be lined with al fresco dining and boutique retail, mirroring the thriving urban streetscapes that Melbourne is famous for.



Scott Pickett
Estelle, Matilda, Longrain, Chancery Lane, Pastore, Longsong, Lupo, Pastore, Pickett's Deli & Rotisserie

Commissioned by Glenvill Developments to curate the retail offering in YarraBend's Artisan precinct, local northsider Scott Pickett has a vision of bringing the best of gourmet Melbourne into the neighbourhood.

Embrace a way of life that's truly Melbourne, all in one destination.



Image courtesy of Estelle by Scott Pickett — curator of the Artisan food offering

By taking gastronomic cues from some of Melbourne's most exciting food-loving suburbs—such as Richmond, Collingwood and Northcote—the Artisan Precinct will feel familiar and utterly unique at the same time.



Artist Impression



Art & Design.

True to the Glenwill philosophy of 'never ordinary', YarraBend will offer a new slant on urban design, inspired by the area's roots in the art movement.

Representing the vision of some of the most creative minds from around the globe, YarraBend's eye-catching, world-class architecture is connected by dynamic, exciting artwork and sculpture.

In support of emerging artists, YarraBend will hold an art competition. While we reward the artist financially, the biggest prize will go to our residents—a spectacular masterpiece displayed for all to enjoy.

YarraBend's Paper Gallery pays homage to the site's industrial past as the former Alphington Paper Mill.

Above image, Heide Museum of Modern Art, Heidelberg.



Diversity in architecture.

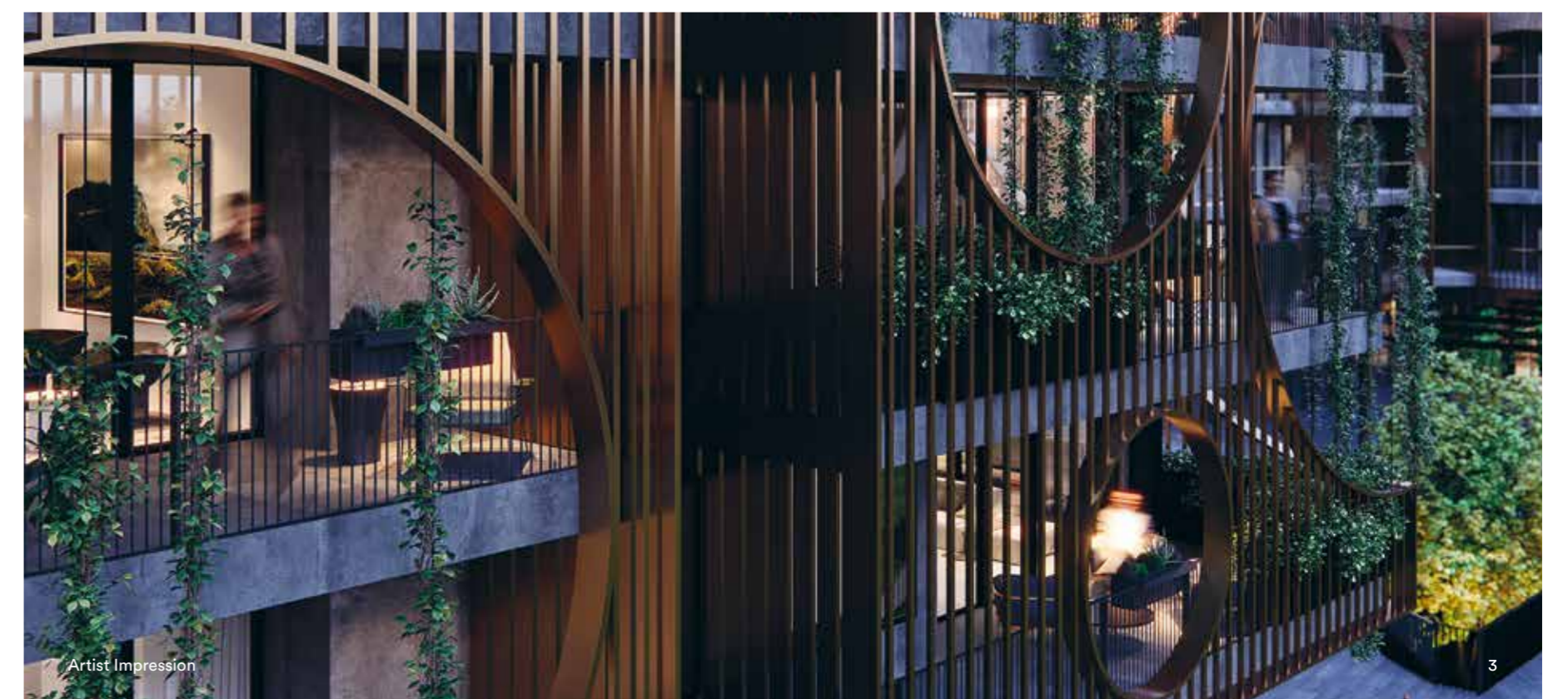
Not a cookie-cutter community.

A bespoke neighbourhood that truly is inspired and 'different', YarraBend is a passionate celebration of diversity—and already a renowned destination for advanced design.

Imagined and realised by bold, brave architects and consultants, each precinct embodies a unique character that effortlessly combines the old and the new.



1. The Mills Lofts
2. Fourdrinier House
3. Artisan Residences



Sustainability.

At YarraBend, sustainability was never a box to be ticked upon completion.

It's the compelling force behind changing the way we occupy Planet Earth. From our green rooftops, right down to cyclist and pedestrian friendly roads—sustainability has informed YarraBend's creation.

Solar power, electric car-charge points, in-wall battery storage, energy-efficient mood lighting—the closer you look, the more it feels like you are light years ahead.

In what was dubbed the world's first Tesla Town, Tesla Powerwalls were a standard inclusion in the Parkview house and land release.

Artisan Residences features a communal landscaped rooftop where you can grow vegetables and herbs for a more sustainable approach to cooking.



Artist Impression

01

Environment-friendly development.

Outer space thinking, earthly living.



Leading the way in sustainable design, YarraBend has achieved six leaves, the highest possible UDIA EnviroDevelopment rating.

02

Electric car chargers.

Supporting the travel needs of the world's most liveable suburb.



Convenient electric car charging stations throughout YarraBend will keep you moving.

03

Recycled materials.

Bringing elements of the past into the future.



Along with working recycled materials into YarraBend's design, we're adapting some historic buildings from the mill to create something exciting and new. Mother Earth would be pleased.

04

Rainwater tanks.

Sometimes a rainy day isn't so bad.



Rainwater tanks across YarraBend can hold over 300,000 litres of water. The result: residents consume less metered water, and during downpours, there's less stress on stormwater drainage systems. Sometimes less really is more.



Knowledge.

Welcome to your neighbourhood network of knowledge.

The more you know, the more you can change the world. These days, we've got instant access to more information than we could ever imagine—what we lack is inspiration. At YarraBend we want to give people the opportunity to learn and grow, but we also want to instil an appreciation for creative thinking. Innovative ideas are at the heart of YarraBend because we want to prove that creative solutions can bring positive change to the broader Melbourne community.

As well as having some of Melbourne's most prestigious schools and universities nearby, YarraBend will transform the way people work (and learn) from home.

Discover a place to live, learn and realise every potential.

01

WorkLab.

Reinventing the concept of 'working from home'.



YarraBend will also be a hub for the sharing of knowledge and collision of ideas, with the WorkLab offering conducive co-working spaces and quality business amenities.

02

Your knowledge network.

Connect with like-minded thinkers, dreamers and doers.



Whether you're looking to carpool to class, find a business mentor or start a study group, the YarraBend app connects you to like-minded neighbours.

03

Surrounding education.

You're exactly where you need to be.



YarraBend is located in one of Australia's highest-regarded school districts. With 21 schools within a five-minute bike ride, and universities not much further, YarraBend families are truly embracing a smart future.

04

Internet.

Speed and convenience—everywhere.



With free Wi-Fi throughout Artisan Park, Heritage Park and Paper Square, you'll never be left searching for a signal.

Better still, YarraBend's partnership with OptiComm (an independent, licensed Australian telecommunications carrier) guarantees fibre connection to the home.

04

Project Team

Glenvill
Project Team

66
68



GLENVILL DEVELOPMENTS

Capitalising on a deep knowledge of the residential sector gained across sixty years, Glenvill's development arm is a natural extension of a mission to deliver outstanding outcomes. Whilst a large focus is in the residential space, Glenvill's track-record also includes retail, office, infrastructure and land subdivision.

With a market leading legacy, Glenvill Developments operate a truly 360-degree understanding of the development and property lifecycle. Projects begin with site-responsive planning and urban design, ensuring each development enhances to the local area and builds on established neighborhood amenity.

Glenvill believes infill developments should add value and create a more beautiful environment for the community at large. Glenvill are conscious of surrounding communities and respond to the unique set of influences in each setting. Glenvill's developments are deeply considered, beautifully constructed, and built to endure. Glenvill defines real value by the quality of living experienced by the end occupant.

→ glenvill.com.au



From humble beginnings to a market-leading group, watch Glenvill's evolution over the last 60 years.

Architects.

DKO

One of Australia's leading innovative design practices, DKO specialises in masterplanning, urban design, architecture and interior design. It has an international presence with a reputation for rigorous testing and diverse typology responses, reflecting the needs of contemporary residents.

ELENBERG FRASER

Elenberg Fraser—not your average architecture firm. An integrated design practice operating across the Asia-Pacific region, creating buildings that prove that good design leads to economic, social and cultural benefits. The outcome is sensory—architecture that makes people think and that people can feel, not just see.

Technē

Technē Architecture and Interior Design creates bespoke spaces that enrich the human experience, informed by elements of art, engineering, environment, sustainability, and economics. Its layered and textured designs have elevated Australia's modern design aesthetic onto the international stage.

Landscape & masterplanning.

mdg

MDG strives for an appropriate balance between the environment and the ultimate user's needs. It aims to create imaginative, engaging and functional landscapes that deliver a distinctive identity and sense of place.

mgs

MGS Architects exists to create quietly brilliant places—places with longevity and adaptability that deliver daily value to the people who use them. Driven by an educated curiosity and a desire to do work that contributes to the development of the inclusive city, MGS reimagined the heritage of the former Paper Mill into superior urban design.

E

With an understanding of how space and facility work together to create lifestyle and amenity, Eckersley Garden Architecture offers a revitalised approach to landscape design. Merging experience and creativity, their passion lies in designing unique gardens that invite people to enjoy their outdoor space.

JCB

Jackson
Clements
Burrows
Architects

Jackson Clements Burrows Architects (JCB) is an award-winning architecture, interior design and urban design studio based in Melbourne. Their collaborative multi-disciplinary team is committed to the exploration of innovative socially and environmentally sustainable design across a wide range of project types and scales.

pointarchitects

Founded over 10 years ago, Point Architects are highly regarded for their commitment to clever design and intelligent living solutions, especially in medium-density and specialised housing.

rothelowman

A commercially astute architecture, urban design and interior design consultancy, Rothelowman has been at the forefront of innovation. It specialises in major mixed-use, commercial, multi-residential, hospitality and retail projects, with a design-led approach for modern Australian and global cities.

ASPECT Studios®

One of the most highly credentialed and capable landscape studios in Australia, Aspect Studios are designers, landscape architects and urbanists creating projects that improve the social, environmental and civic qualities of our cities and landscapes.

Tract

Tract is a national planning and design practice specialising in town planning, urban design, landscape architecture and associated digital media. Their approach is to ensure the landscape architectural treatment for any site is of the highest design quality that respects the environment and all its inhabitants. Tract seeks to produce enduring, site sensitive, high-quality designs that express a unique sense of place.

Acre

Acre is a landscape architecture practice with a focus on distinct environments tailored for individuals. Collaborative and inquisitive, Acre creates spaces that carefully combine monolithic, clean detailing with stylised wildness, placing equal emphasis on architecture and landscaping.

CONRAD

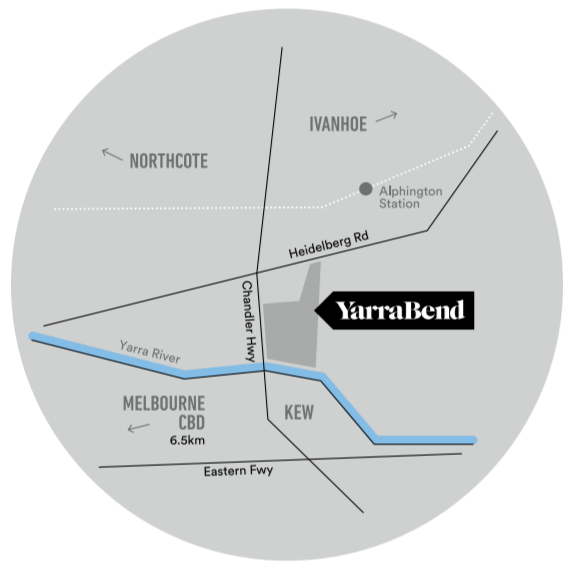
Architecture + Interiors

A boutique architectural and interior design practice, Conrad Architects is committed to delivering bespoke solutions for modern living. It has forged a reputation for timeless architecture and interiors, known for creating some of Melbourne's most sought-after luxury townhouses and apartments.

YarraBend

The World's Most Liveable Suburb





On site display suite.
16 Parkview Road, Alphington
Phone 03 9573 8320



yarrabend.com.au

-  @yarrabend_
-  @yarrabend
-  @glenvilldevelopments
-  @glenvill

To stay up to date with the latest YarraBend news,
visit yarrabend.com.au/news

Disclaimer This document has been produced prior to obtaining some planning approvals and prior to the commencement or completion of construction. Purchasers and intending purchasers should note that changes may be made to the master plan development during community consultation, planning approvals and construction. Photographs, illustrations and artists impressions depicting parks, landscaping, interiors, exteriors and views are intended as a guide only and are subject to change without notice. Purchasers and intending purchasers are encouraged to and must rely on their own enquiries to ensure the property they are purchasing meets their requirements and expectations. The information in this document is believed to be correct but is not guaranteed. This document is not an offer or a contract. Glenwill expressly disclaims any and all liability relating to, or resulting from, the use of or reliance on, any information contained in this document by any person.

GLENVILL DEVELOPMENTS



yarrabend.com.au